



*Built for superior performance!*

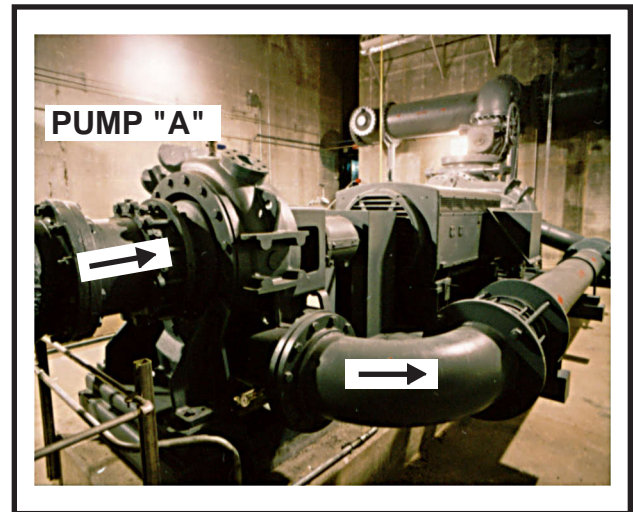
## Custom High-Head Pumping Systems

### Sample Installation:

**Project:** Beaver Ruin Pump Station  
Lawrenceville, GA  
**Engineer:** Jordan, Jones & Goulding, Atlanta, GA  
**Contractor:** Beers Construction Co., Atlanta, GA  
**Owner:** Gwinnett County, GA  
**Representative:** GPM Environmental, Atlanta, GA  
**Station Size:** 20 MGD  
**System Duty Point:** 7,000 GPM at 450 ft. TDH

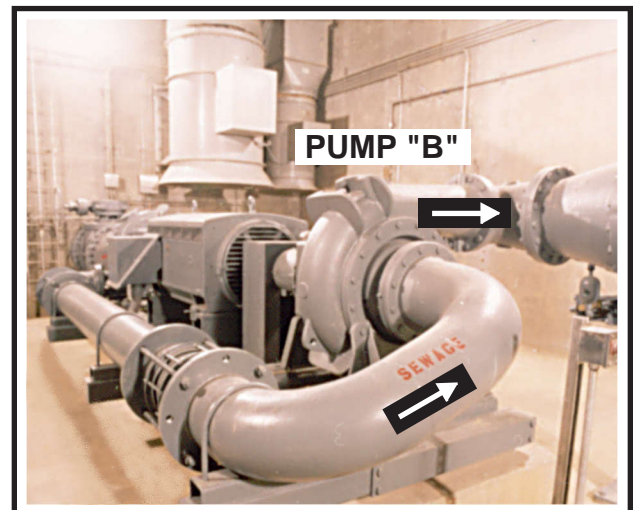
Pumps "A" and "B" each have a rated design capacity of 7,000 GPM at 225 feet TDH.

Sewage flow enters the suction inlet of Pump A and is discharged into the horizontal pipe to Pump "B".



Discharge pipe coming from Pump "A" is connected to the suction inlet of Pump "B".

This "series" pumping arrangement yields 7,000 GPM at 450 feet TDH output from Pump "B".



**Pumps:** S.O.# 9805351  
Qty-6 Morris Series 7100 NC  
Model 1214255V-3  
3 - Pump Sets, Horizontal Base Mounted with  
Interconnecting Piping (series)  
Ductile Iron Casing  
John Crane 5620 Tandem Mechanical Seals, TC/TC

**Motors:** U.S. Electric, 1250 HP, 1180 RPM, 4160 Volts  
Double Ended Shaft  
Inverter Duty, Premium Efficient

**VFD:** ABB - ACS 1000 Medium Voltage Drives (4160 Volts)